

Modeling of Residential Microgrid Application Integrated with Full-Bridge-Forward DC-DC Converter

Lukka Ajaykumar*, P Srinivasarao

* M-Tech Scholar, Power Electronics & Electrical Drives, Department of Electrical and Electronics Engineering, Sri sunflower Engineering & technology, Krishna, (A.P), India

Assistant Professor, Department of Electrical and Electronics Engineering, Sri sunflower Engineering & technology, Krishna, (A.P), India

Abstract

This paper proposes a novel topology using the photovoltaic cell based application of the microgrid to show the grid voltage. The integrated converter topology for interfacing between the dc bus and energy storage system of microgrid. The integrated full-bridge-forward dc-dc converter presents the following features: high voltage ratio, bidirectional power flow, galvanic isolation, and most important one is low number of active devices compared to the previously used to similar applications. The converter can be approached detailed including three different types of clamping circuits which are compared with each circuit. The structure and operating principle, Dual active bridge converter comparison and experimental results of the proposed topology are presented.

Keywords: Three level inverter, photovoltaic generation, dc-dc converter, energy storage system, microgrid.

Introduction

Now a day's electrical energy consumption has been considerably increasing in recent years. The population growth has direct influence towards this fact. Therefore, it is essential to increase the electric power generation. Besides, once fossil fuels produce enormous amount of pollution and are becoming scarce, other sources for electric power generation, mainly clean and Renewable ones have been receiving more attention and importance lately.

microgrid concept has been gaining more notoriety each day [1]. Some advantages of the microgrids are the possibility to generate electric power with lower environmental impact and easier connection of these sources to the utility, including the power management capability among their elements. Regarding the connection methods of the distributed energy sources, energy storage devices, and loads in a microgrid, the dc bus is the simplest interconnection bus [2]. This configuration results in high efficiency, high reliability, and no frequency or phase control requirements, when compared to the ac interconnection bus [5]. Moreover, it has low distribution and transmission losses, low cost, the possibility to operate across long distances, and it does not use transformers, in turn leading to volume and cost reduction.

In the microgrid systems, the energy storage system is of great importance. It is responsible for supplying energy to the loads when the main sources are not capable during short periods of time and steady-state operation. The proposed residential microgrid energy storage system composed of a battery bank and a super capacitor bank of the microgrid energy storage system.

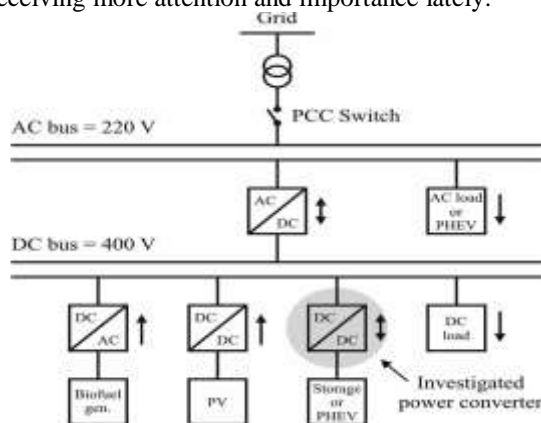


Fig.1. Residential microgrid system under study

To increase the large amount of energy go for Distribution generation, DG units had some disadvantages to reduce such problems. The

The DAB converter which is the most use topology for this application, [1] it needs an elevated number of active devices thereby resulting in high cost. It also presents a high input and output current ripple, A dc–dc bidirectional converter can be added between the energy storage device and one of the full-bridges [3][6] it provides advantages, such as to extend the battery lifetime by maintaining the supplied current with a low ripple.

Proposed integrated full-bridge-forward Dc–Dc converter

The proposed dc–dc converter, shown in Fig. 2, is the integration of a full-bridge and a forward converter. The

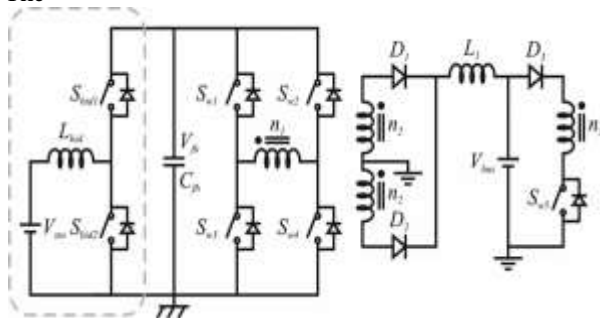


Fig.2. Proposed integrated full-bridge-forward dc–dc converter including a bidirectional converter.

Full bridge converter is responsible for the energy storage system discharging stage, while the forward converter is responsible for the energy storage system charging stage in the microgrid system this forward converter resultant by the integration process is called a double ended forward converter.

A three-winding transformer is required in this topology. Windings 1 and 2 are used in the full-bridge operation, and windings 1 and 3 in the forward operation. One diode needs to be added in series with the transformer tertiary winding to avoid current circulation through the ant parallel diode of the forward converter switch during full-bridge converter operation mode.

A. Proposed Converter Including Dissipative Passive Clamping Circuit

In order to avoid voltage spikes during the turn-off of the forward converter active switch due to the interruption of the current through the transformer leakage inductance, one passive clamping circuit is first added in parallel to this switch. This clamping circuit is composed of one diode, one capacitor, and one resistor, as shown in Fig. 3. Moreover, this circuit plays a role in the transformer demagnetizing

process, once the clamping voltage is applied on the transformer tertiary winding during two operation subintervals and a certain amount of current circulates through it.

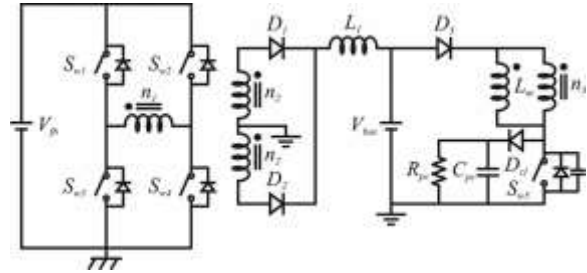


Fig.3. Proposed converter with dissipative passive Clamping circuit.

This topology solves the voltage spike problem. However, during the clamping circuit on state, the magnetizing inductance current is deviated toward the passive elements. This process imposes power losses on the topology, which reduce the converter efficiency.

The power losses can be reduced as the clamping circuit voltage and the transformer magnetizing inductance become higher, as well as the transformer leakage inductance becomes lower. This occurs because the inversion of the current through the transformer primary winding occurs more quickly, reducing the amount of energy deviated toward the passive clamping circuit.

Another way to improve the efficiency of the double-ended forward converter is using different types of clamping circuits. Two new topologies are proposed: a regenerative passive clamping circuit, presented in Section II-B, and a regenerative active clamping circuit, shown in Section II-C.

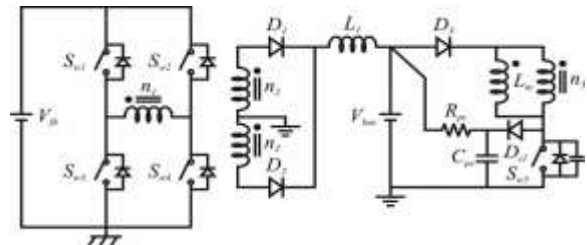


Fig.4. Proposed converter with regenerative passive clamping circuit.

B. Proposed Converter Including Regenerative Passive Clamping

Using the same components of the dissipative passive clamping circuit shown in Fig. 3 and changing one of the resistor connection points, as shown in Fig. 4, it is possible to modify the clamping circuit in such a way that part of the deviated energy is regenerated back to the microgrid dc bus and a smaller part is dissipated over the resistor. Compared to the converter topology with dissipative passive clamping, for the same resistor value, the voltage across the clamping capacitor in this new topology increases, but the average voltage across the resistor is lower. These results are obtained through converter simulation.

C. Proposed Converter Including Regenerative Active Clamping

One alternative for reducing the losses over the clamping circuit even more is to use a regenerative active clamping circuit. For the double-ended forward topology under study special attention should be taken, since the active clamping circuit cannot regenerate energy to the microgrid dc bus through the transformer tertiary winding due to the presence of the series diode, thus eliminating the possibility of use of some traditional active clamping circuits.

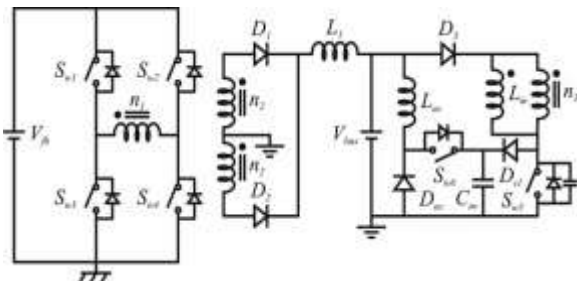


Fig.5. Proposed converter with regenerative Active clamping circuit.

Considering this fact, the proposed forward converter with an active clamping topology is shown in Fig.5. Basically; the clamping resistor is replaced by an active switch, a diode, and an inductor.

The energy stored in the clamping capacitor due to the current i_{Dc} is delivered back to the dc bus, instead of being dissipated over a resistor. The active clamping circuit switch can be turned ON during any forward converter operation stage. The switch on time (duty cycle) is an important factor to determine the voltage level across the clamping circuit. The lower the switch on time, the higher the clamping circuit voltage and, consequently, a lower portion of

energy is deviated toward the clamping circuit, reducing the switching and conduction losses on this circuit, and increasing the converter efficiency. In this converter, there are two additional operation stages. One in which the clamping circuit current circulates through $Sw6$ and Lac , and another in which the current circulates through Dac and Lac . The transformer design methodology is briefly discussed in [1].

TABLE I Converters' Comparison

parameters	DAB	DAB + bidirectiona 1	FB-Forward + bidirectional
Active switches	8	10	7or8(with active clamping)
inductors	0	1	2
Transformer turns ratio	1:6	1:6	1:6:7
Input voltage	100	80	80
Output voltage	200	365	400
Bi-directional power flow	No	yes	yes

Proposed converter including pv cell based micro grid application

The general block diagram of pv cell based residential microgrid application as shown in the figure 6.

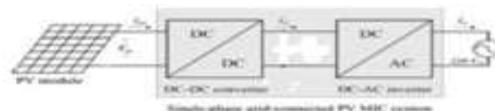


Fig.6. proposed converter including pv cell based micro grid application.

The equivalent circuit of a PV cell is shown in Fig. 6(a).

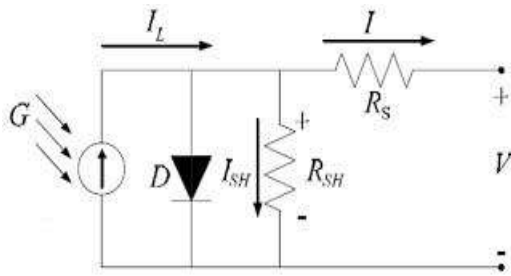


Fig.6 (a).equivalent circuit of a pv cell

It includes a current source, a diode, a series Resistance and a shunt resistance. In view of that, the current to the load can be given as: In this equation, I_{ph} is the photocurrent, I_s is the reverse saturation current of the diode, q is the electron charge, V is the voltage across the diode, K is the Boltzmann's constant, T is the junction temperature, N is the ideality factor of the diode, and R_s and R_{sh} are the series and shunt resistors of the cell, respectively. As a result, the complete physical behavior of the PV cell is in relation with I_{ph} , I_s , R_s and R_{sh} from one hand and with two environmental parameters as the temperature and the solar radiation from the other hand.

$$I = I_{ph} - I_s \left(\exp \frac{q(V + R_s I)}{NKT} - 1 \right) - \frac{(V + R_s I)}{R_{sh}} \quad 2$$

In this proposed circuit using physical component method topology dc source voltage boost and inverter output is given to the single phase grid connection. By using control circuit to minimize the errors at the grid side voltage finally it gives the pure sinusoidal waveforms and the corresponding mat lab circuit are shown in the figure 7 and 8.

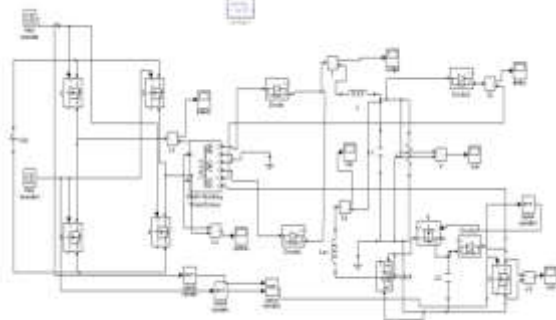


Fig.7.Full bridge forward converter including regenerative active clamping circuit.

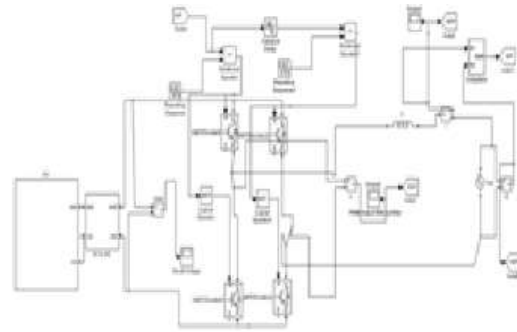


Fig. 8. Proposed converter including pv cell based micro grid application

Simulation results

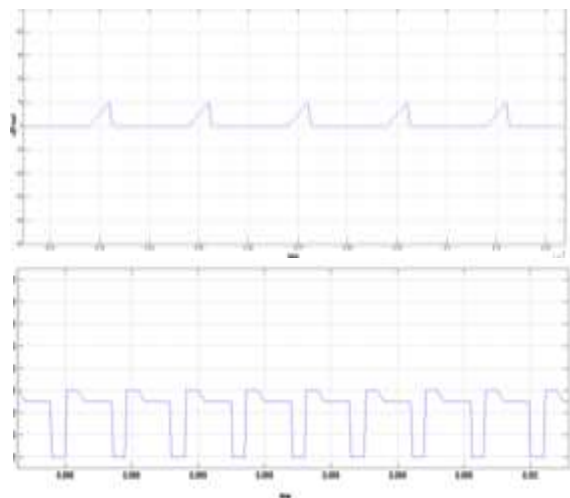
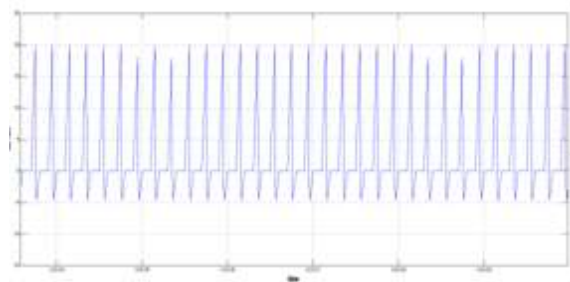


Fig.8. Current on tertiary winding and forward Converter switch voltage



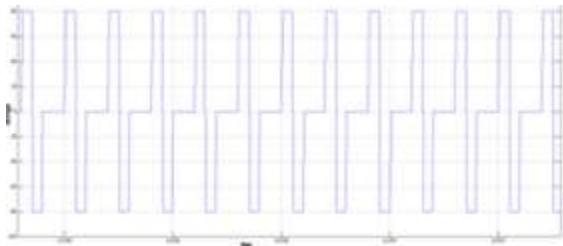


Fig.9. Current and voltage on transformer primary winding.

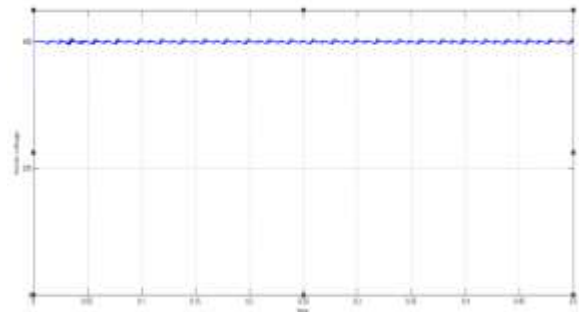


Fig. 12. Dc-Dc converter boost voltage

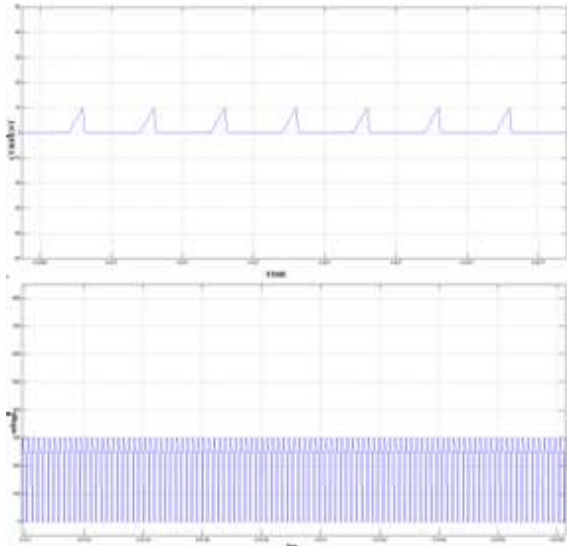


Fig. 10. Current on tertiary winding and forward Converter switch voltage

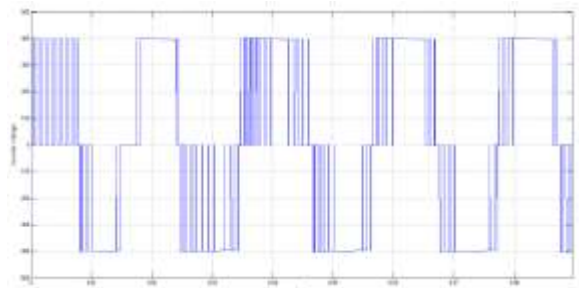


Fig.13. Three level inverter output voltage

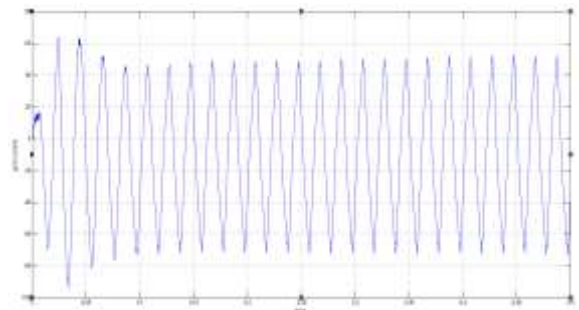


Fig.14. Grid current

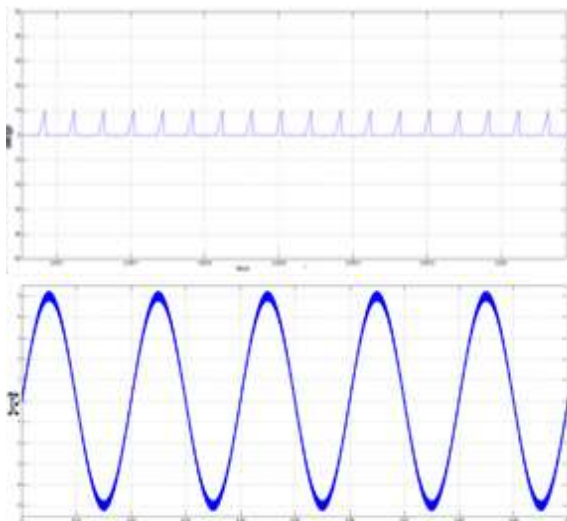


Fig. 11. Currents through the dc bus (1 A/div.) and clamping circuit inductor (200 mA/div.).

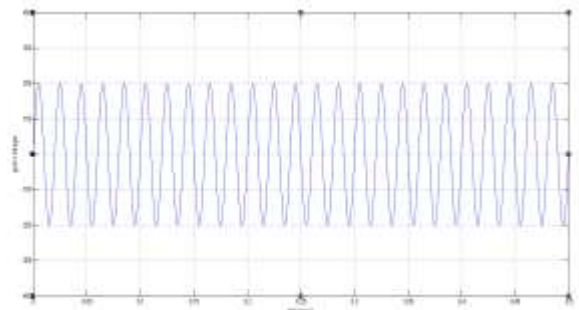


Fig.15. Grid voltage

Conclusion

This paper describes the integrated full-bridge-forward dc–dc converter to connect the energy storage system to the dc bus of a residential microgrid. The converter major advantages are reduced active switches compared to the DAB

converter and individual topologies, high usage of the super capacitor bank stored energy, and a long battery bank lifetime. The proposed topology presents low input and output current ripple, high voltage ratio, high power operation on the discharging process, galvanic isolation, and bidirectional power flow.

Three different clamping circuits (dissipative passive, regenerative passive and regenerative active) are studied. As an Application of microgrid Single phase PV cell power generation is given to the grid through the boost voltage of the regenerative active clamping circuit and corresponding simulation results are shown.

References

1. Leandro Roggia, Luciano schuch, Jos'é Eduardo Baggio, Cassiano rech, and jose Renes pinheiro "Integrated full bridge forward dc-dc converter for a residential microgrid application" *IEEE Trans. Power Electron.*, vol. 28, no. 4, April. 2013.
2. K. Sun, L. Zhang, Y. Xing, and J. M. Guerrero, "A distributed control strategy based on DC bus signaling for modular photovoltaic generation systems with battery energy storage," *IEEE Trans. Power Electron.*, vol. 26, no. 10, pp. 3032–3045, Oct. 2011.
3. Y. A.-R. I. Mohamed, "Mitigation of converter-grid resonance, grid induced Distortion, and parametric instabilities in converter-based distributed generation," *IEEE Trans. Power Electron.*, vol. 26, no. 3, pp. 983–996, Mar. 2011.
4. H. Zhou, T. Bhattacharya, D. Tran, T. S. T. Siew, and A. M. Khambadkone, "Composite energy storage system involving battery and ultracapacitor with dynamic energy management in microgrid applications," *IEEE Trans. Power Electron.*, vol. 26, no. 3, pp. 923–930, Mar. 2011.
5. R. S. Balog and P. T. Krein, "Bus selection in multibus DC microgrids," *IEEE Trans. Power Electron.*, vol. 26, no. 3, pp. 860–867, Mar. 2011.
6. H. Zhou and A. M. Khambadkone, "Hybrid modulation for dual-active bridge bidirectional converter with extended power range for ultracapacitor application," *IEEE Trans. Ind. Appl.*, vol. 45, no. 4, pp. 1434–1442, Jul. 2009.
7. N.M.L.Tan, T. Abe, and H. Akagi, "Design and performance of a bidirectional Isolated DC–DC converter for a battery energy storage system," *IEEE Trans. Power Electron.*, vol. 27, no. 3, pp. 1237–1248, Mar. 2012
8. F.G.Capponi, P.Santoro, and E.Crescenzi, "HBCS converter: Abidirectional DC/DC converter for optimal power flow regulation in supercapacitor applications," in *Proc.IEEE Ind. Appl.Conf.*, Sep. 2007, pp. 2009–2015.
9. M.H.Todorovic, L.Palma, and P.N.Enjeti, "Design of a wide input range DC–DC converter with a robust power control scheme suitable for fuel cell power conversion," *IEEE Trans. Ind. Electron.*, vol. 55, no. 3, pp. 1247–1255, Mar. 2008
10. S.J.Jang, T.W. Lee, W.C Lee, and C.Y.Won, "Bi-directional dc–dc converter for fuel cell generation system," in *Proc. IEEE Power Electron. Spec. Conf.*, Jun. 2004, vol. 6, pp. 4722–4728.
11. M.B. Camara, H. Gualous, F. Gustin, and A. Berthon, "Design and new control of DC/DC converters to share energy between supercapacitors and batteries in hybrid vehicles," *IEEE Trans. Veh. Technol.*, vol. 57, no. 5, pp. 2721–2735, Sep. 2008.
12. Y.-S. Lee and B.-T. Lin, "Modeling, analysis, and design criteria of actively clamped double-ended converters," *IEEE Trans. Circuits Syst. I, Fundam. Theory Appl.*, vol. 47, no. 3, pp. 312–323, Mar. 2000.